



# Third Generation Air Winch Series

1,450 – 3,600 kg (3,200 – 8,000 lb)



# When Tough Just Isn't Enough

## Third Generation Air Winches 1,450 – 3,600 kg (3,200 – 8,000 lb)

Since 1924, Ingersoll Rand has built extremely durable and reliable winches and hoists. Designed with premium features and built using rugged cast iron and steel, Ingersoll Rand doesn't take shortcuts and never uses inferior components. Ingersoll Rand Third Generation Winches are the workhorse winches of the Ingersoll Rand winch line. They have all the features you need and none you don't to get the job done. Ingersoll Rand winches are the gold standard. They are often copied but never equaled. Trusted by oilmen, offshore workers, miners and heavy construction crews around the globe, you can count on Ingersoll Rand winches to get the job done.



### Third Generation Winch Features:

- **Rugged cast construction** for extreme durability
- **Radial piston motor** for smooth, reliable power
- **Gearbox in drum design** saves space
- **Lift and shift variable speed lever** for precise control and built-in safety
- **Individual load testing** before shipment and delivered with manufacturer's test certificate for quality assurance
- **Built using nearly a century of experience** and constructed in advanced manufacturing facilities with ISO 9001 quality levels



Ship Building



Steel



Heavy Construction



Marine



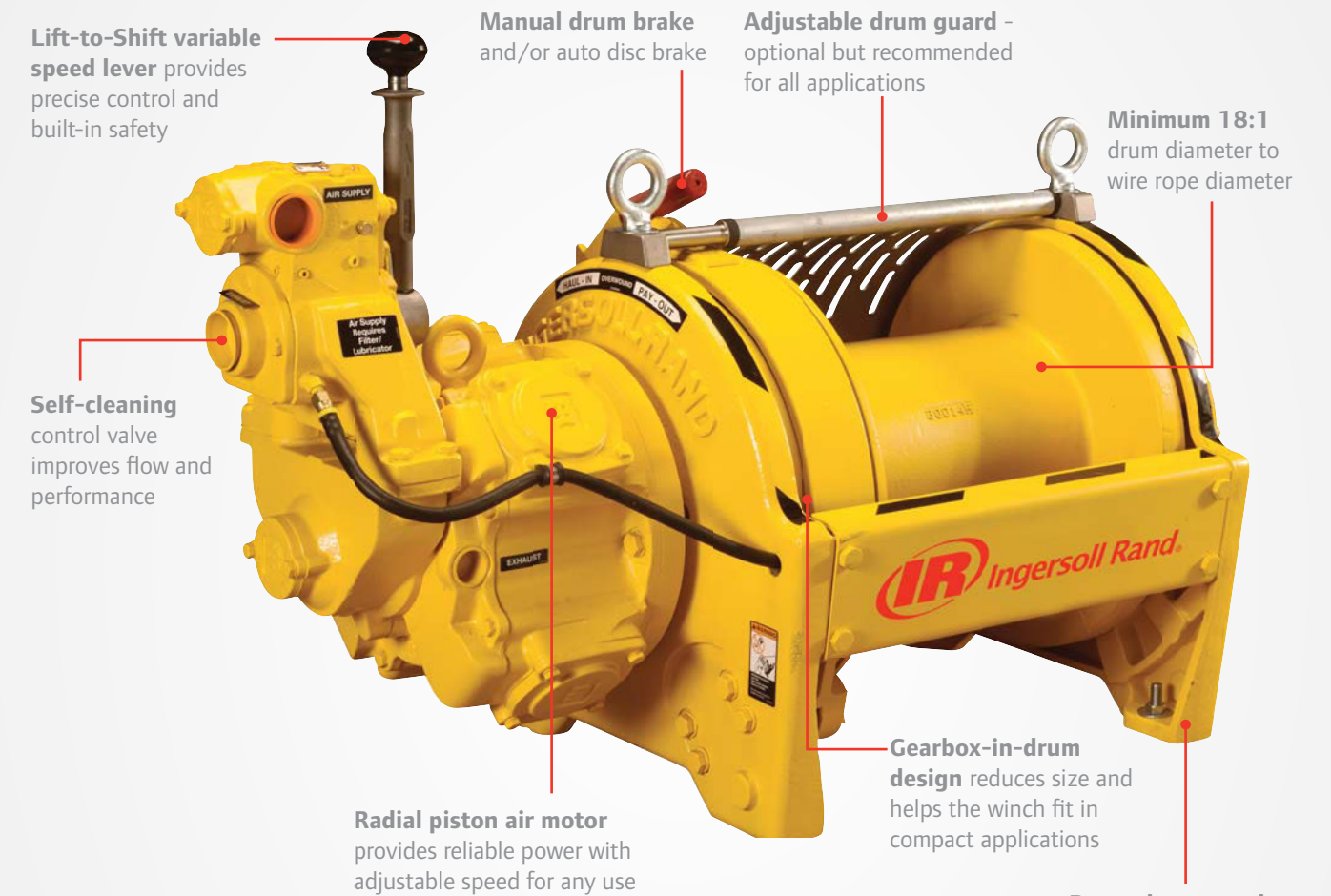
Offshore



Onshore

# Third Generation FA2B Air Winch 1,450 kg (3,200 lb)

The Ingersoll Rand Third Generation FA2B winch is built to handle whatever you need to throw at it. Made from cast steel and equipped with a powerful radial piston air motor, the FA2B winch is built to lift 1,450 kg (3,200 lbs) in extreme conditions.



### Ideal for:



Onshore



Offshore



Marine

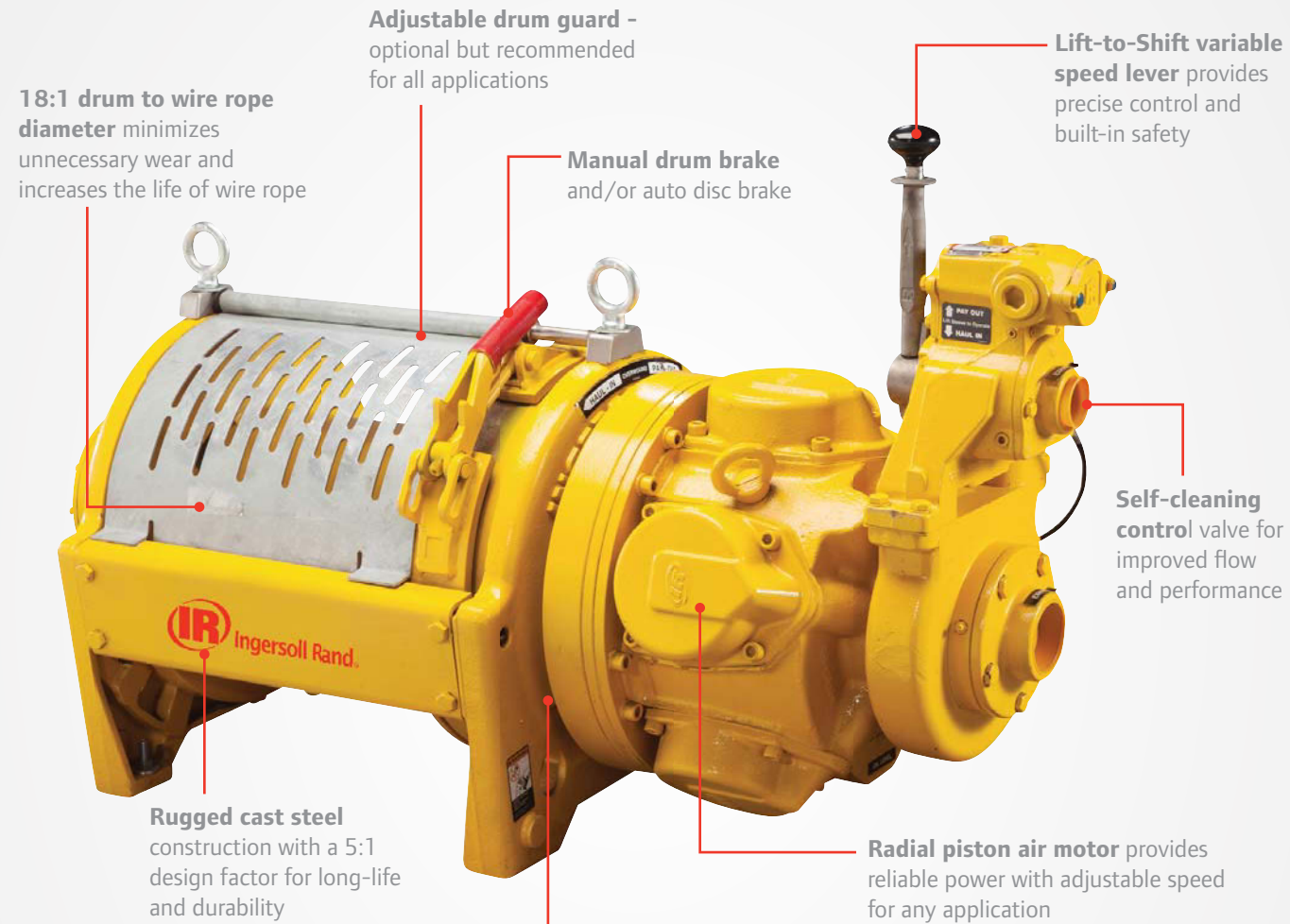
Model	Line Pull Capacity			Lifting Speed at Top Layer <sup>(1)</sup>	Air Consumption with Rated Load	Air Volume Needed to Move Rated Load at Top Layer	Sound Level as per EN 14492-1	Drum Capacity		Net Weight
	First Layer kg (lb)	Mid Drum kg (lb)	Top Layer kg (lb)					Rope Length m (ft)	Rope Diameter mm (in)	
FA2B-7**	2,260 (5,000)	1,820 (4,000)	1,450 (3,200)	37 (122)	10 (350)	0.8 (28.7)	87	108 (356)	13 (1/2)	308 (679)
FA2B-13**	2,260 (5,000)	1,820 (4,000)	1,450 (3,200)	37 (122)	10 (350)	0.8 (28.7)	87	217 (712)	13 (1/2)	308 (679)
FA2B-20**	2,260 (5,000)	1,820 (4,000)	1,450 (3,200)	37 (122)	10 (350)	0.8 (28.7)	87	325 (1,068)	13 (1/2)	308 (679)
FA2B-24**	2,260 (5,000)	1,820 (4,000)	1,450 (3,200)	37 (122)	10 (350)	0.8 (28.7)	87	392 (1,287)	13 (1/2)	308 (679)

<sup>(1)</sup> Top layer speed is based on rated capacity

## Third Generation FA2.5A Air Winch

1,860 kg (4,100 lb)

The Ingersoll Rand Third Generation FA2.5A winch is a mid range workhorse. It comes with the premium components that make a difference, like a self-cleaning control valve and a powerful radial piston air motor. It packages them into a rugged, yet cost effective winch.



Ideal for:



Lifting Ratings at 5:1 design factor and performance at 6.3 bar (90 psi) at air inlet when winch is operating

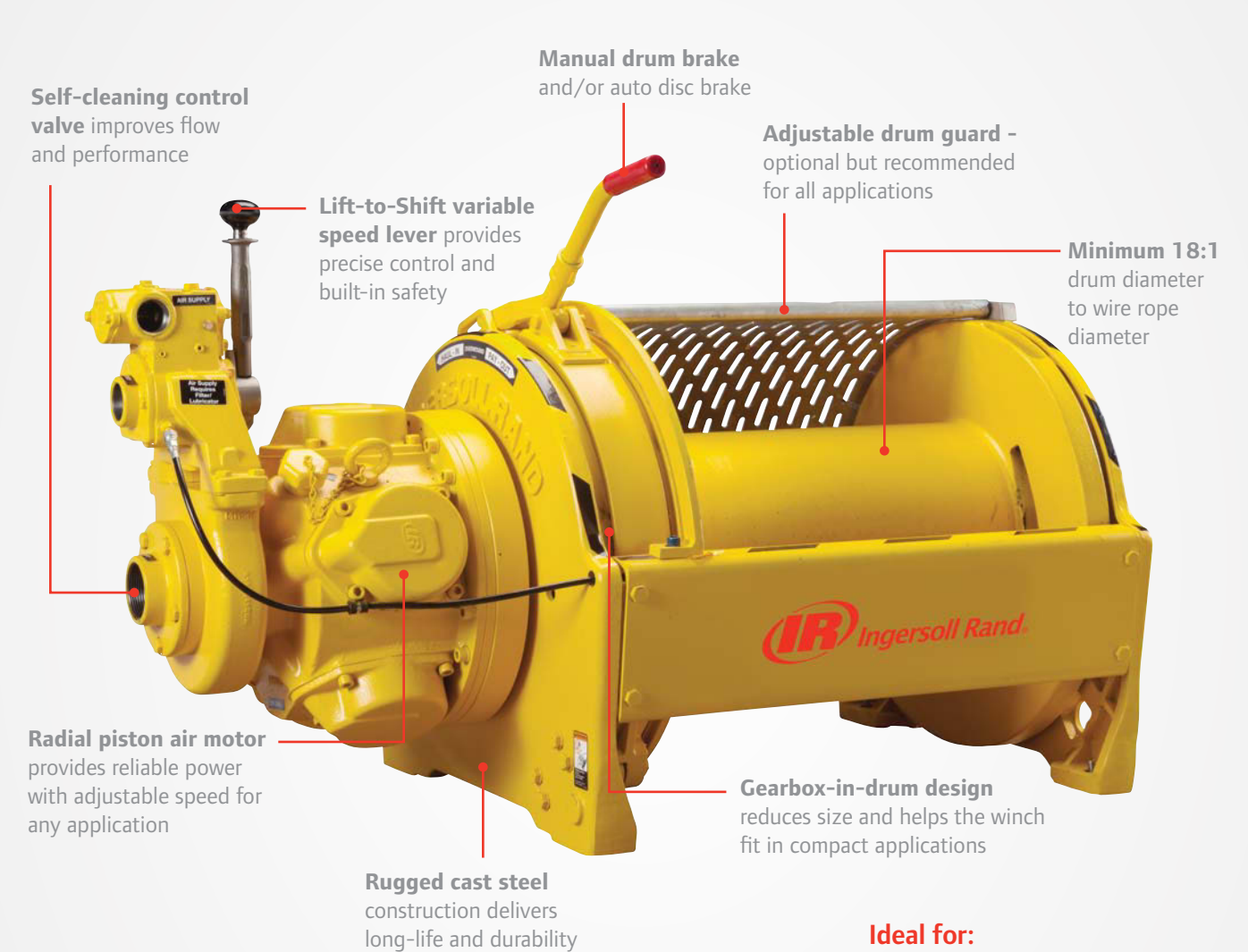
Model	Line Pull Capacity			Lifting Speed at Top Layer <sup>(1)</sup>	Air Consumption with Rated Load	Air Volume Needed to Move Rated Load at Top Layer	Sound Level as per EN 14492-1	Drum Capacity		Net Weight
	First Layer	Mid Drum	Top Layer					Rope Length	Rope Diameter	
FA2.5A-7**	2,810 (6,200)	2,270 (5,000)	1,860 (4,100)	43 (141)	20 (700)	1.4 (49.6)	87	63 (206)	16 (5/8)	372 (818)
FA2.5A-13**	2,810 (6,200)	2,270 (5,000)	1,860 (4,100)	43 (141)	20 (700)	1.4 (49.6)	87	127 (416)	16 (5/8)	372 (818)
FA2.5A-20**	2,810 (6,200)	2,270 (5,000)	1,860 (4,100)	43 (141)	20 (700)	1.4 (49.6)	87	191 (625)	16 (5/8)	372 (818)
FA2.5A-24**	2,810 (6,200)	2,270 (5,000)	1,860 (4,100)	43 (141)	20 (700)	1.4 (49.6)	87	230 (754)	16 (5/8)	372 (818)

<sup>(1)</sup> Top layer speed is based on rated capacity

## Third Generation FA5A Air Winch

3,600 kg (8,000 lb)

When you need to move a large load, look no further than the Ingersoll Rand Third Generation FA5A winch. It combines a powerful radial piston air motor with thoughtful features like a space-saving gearbox-in-drum design to create an economical winch that still gets the job done.



Ideal for:



Lifting Ratings at 5:1 design factor and performance at 6.3 bar (90 psi) at air inlet when winch is operating

Model	Line Pull Capacity			Lifting Speed at Top Layer <sup>(1)</sup>	Air Consumption with Rated Load	Air Volume Needed to Move Rated Load at Top Layer	Sound Level as per EN 14492-1	Drum Capacity		Net Weight
	First Layer	Mid Drum	Top Layer					Rope Length	Rope Diameter	
FA5A-12**	5,890 (13,000)	4,540 (10,000)	3,600 (8,000)	13 (43)	20 (700)	4.6 (162.8)	89	177 (581)	20 (3/4)	569 (1,254)
FA5A-24**	5,890 (13,000)	4,540 (10,000)	3,600 (8,000)	13 (43)	20 (700)	4.6 (162.8)	89	366 (1,200)	20 (3/4)	569 (1,254)

<sup>(1)</sup> Top layer speed is based on rated capacity

## A Variety of Options



Drum Guard



Press Roller



Airline Accessories



Construction Cage

- Airline accessories
- Overload protection
- Drum Guard
- Rope press roller assembly
- Construction cage

## Third Generation Personnel Air Winch

Ingersoll Rand Dual Purpose winches are designed to maximize the use of your equipment. They combine the time-tested, rugged durability of our standard Force Five winches with enhanced safety features for lifting personnel. In environments where dedicated Man Rider® winches are not required, Ingersoll Rand Dual Purpose winches offer you the versatility to lift people and material with one winch.



## Global Parts and Services

Ingersoll Rand winches are built to last in even the harshest conditions. We are committed to helping you keep your operation running, no matter where your facility is located. We offer a full range of parts and accessories. Plus Ingersoll Rand's global network of factory trained and authorized technicians can install, repair, test and maintain any winch. Service capabilities include:

- Load test and recertifications
- System inspections
- Equipment refurbishments
- Installation and start-up assistance
- Inspector and operator training
- Service and repair

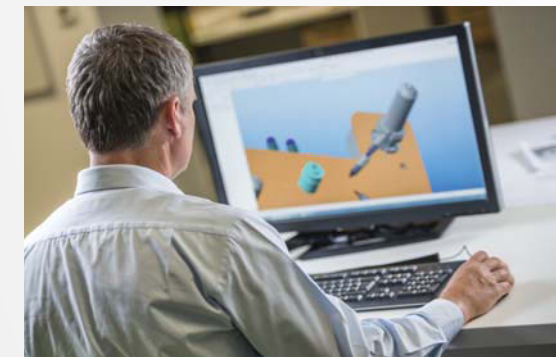


## A Tradition of Proven Reliability, Efficiency and Productivity



No matter where you are located, Ingersoll Rand is committed to serving and providing you with the necessary information with regard to our products and services. Our world-wide network of distributors, certified technicians and engineers are a telephone call away — ready to support you with innovative and cost-effective solutions that will keep your business running at peak performance.

## Special Orders



A significant portion of our business is providing customized solutions for specific applications. We recognize that not all jobs are created equal and that the most cost-effective solutions may not be in an off-the-shelf item. We've designed and manufactured winches and hoists for applications as simple as moving bags of lettuce, to as intricate as installing critical payloads on space vehicles, including high capacity loads 100 tons and above.

- Design for custom capacities
- Custom control systems
- Custom product modifications
- Witness testing and complete certification to most global standards
- Full data package with CAD drawings
- Dedicated project management for your project from conception to delivery
- Onsite services available including presale and evaluation

## For More Information

- [www.ingersollrandproducts.com/lifting](http://www.ingersollrandproducts.com/lifting)
- [lifting@irco.com](mailto:lifting@irco.com)



Ingersoll Rand (NYSE:IR) advances the quality of life by creating comfortable, sustainable and efficient environments. Our people and our family of brands—including Club Car®, Ingersoll Rand®, Thermo King® and Trane®—work together to enhance the quality and comfort of air in homes and buildings; transport and protect food and perishables; and increase industrial productivity and efficiency. We are a \$12 billion global business committed to a world of sustainable progress and enduring results.



[www.ingersollrandproducts.com](http://www.ingersollrandproducts.com)

Distributed by:

Ingersoll Rand, IR, the IR logo are trademarks of Ingersoll Rand, its subsidiaries and/or affiliates. All other trademarks are the property of their respective owners.

Unless otherwise noted this equipment is not designed for transporting people or lifting loads over people. It is the user's responsibility to determine the suitability of this product for any particular use and to check compliance with applicable regulations. Before installation, see maintenance and operations manual for additional warnings and precautions.

Nothing contained on these pages is intended to extend any warranty or representation, expressed or implied, regarding the product described herein. Any such warranties or other terms and conditions of sale of products shall be in accordance with Ingersoll Rand's standard terms and conditions of sale for such products, which are available upon request.

Product improvement is a continuing goal at Ingersoll Rand. Designs and specifications are subject to change without notice or obligation.