



# Hercu-Link<sup>®</sup> Trolley Mount Electric Hoist

5-50 tons



**All steel construction** for better durability

**IEEE45 marine grade motors**, NEMA4 rated with thermal overload protection, optional dual speed motors available

**Fully enclosed, automatic multi disc brake** for corrosion resistance

**Grade 80, alloy steel chain** for maximum corrosion resistance

**Water drain holes** prevent water from being trapped in the block and corroding

**Alloy steel hooks** with safety latches and roller thrust bearings for smooth turning under load.

Ideal for:



Ship Building



Steel



Heavy Construction

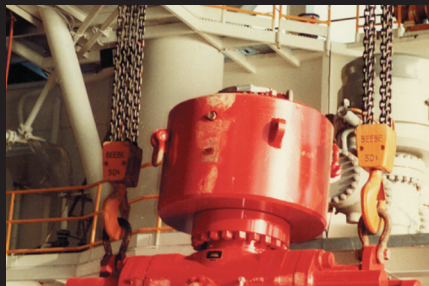
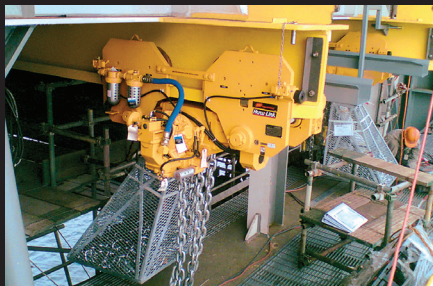


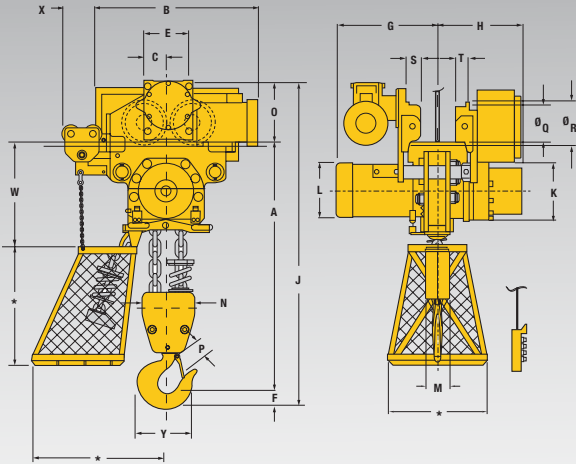
# Hercu-Link® Trolley Mount Electric Hoist

5-50 tons

Ingersoll Rand Hercu-Link® Trolley-Mount Hoists feature the same rugged and compact design as hook mount models. They utilize tough IEEE45 Marine grade motors in the hoist and trolley for years of trouble free service. When you need to sacrifice space but not performance, rely on Ingersoll Rand Hercu-Link Trolley Mount Electric Hoists.

General Performance. Performance at 7 bar (105 psi) air inlet pressure with the motor running											
Model	Capacity	Head room	Hoist lift speed/min	Hoist lower speed/min	Hoist hp	Chain falls	Trolley speed		no. of wheels	Wheel loading per wheel	Ship weight
	kg (lbs)	mm (in)	m (ft)	m (ft)			m/min (ft/min)	hp		kg (lbs)	kg (lbs)
<b>Frame 1 (16 mm chain)</b>											
HE1-005M	5,000 (11,000)	775 (30.50)	5.2 (17)	5.8 (19.1)	7.5	1	5.5 (18)	1.5	4	1,349 (2,968)	411 (905)
HE1-010M	10,000 (22,000)	938 (36.94)	2.6 (8.5)	2.9 (9.6)	7.5	2	5.5 (18)	1.5	4	2,616 (5,755)	502 (1,105)
HE1-015M	15,000 (33,000)	1,057 (41.63)	1.7 (5.6)	1.9 (6.3)	7.5	3	5.5 (18)	1.5	4	3,890 (8,558)	598 (1,315)
HE1-020M	20,000 (44,000)	1,053 (41.44)	1.3 (4.3)	1.5 (4.8)	7.5	4	5.5 (18)	1.5	4	5,151 (11,332)	648 (1,425)
<b>Frame 2 (22 mm chain)</b>											
HE2-012M	12,000 (26,400)	1,045 (41.13)	4.6 (15)	4.9 (16)	15	1	5.5 (18)	1.5	4	3,277 (7,209)	643 (1,415)
HE2-025M	25,000 (55,000)	1,205 (47.44)	2.3 (7.5)	2.4 (8)	15	2	5.5 (18)	1.5	8	6,425 (14,135)	834 (1,835)
HE2-037M	37,000 (81,400)	1,376 (54.19)	1.5 (5)	1.7 (5.5)	15	3	5.5 (18)	1.5	8	4,887 (10,751)	1,682 (3,700)
HE2-050M	50,000 (110,000)	1,480 (58.25)	1.1 (3.7)	1.3 (4.3)	15	4	5.5 (18)	1.5	8	6,502 (14,304)	2,120 (4,665)

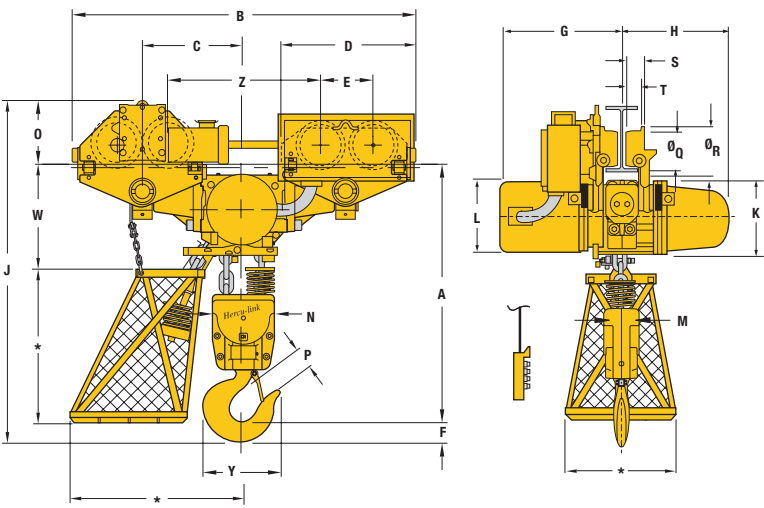




Dimensions: Trolley Mounted Hoist Frame 1 with 16 mm chain mm (in)

Model	A	B	C	D	E	F	G	H	J	K	L
HE1-005M	775 (30.50)	694 (27.31)	98 (3.88)	—	197 (7.75)	46 (1.81)	578 (22.75)	546 (21.50)	1064 (41.44)	241 (9.50)	267 (10.50)
HE1-010M	938 (36.94)	694 (27.31)	98 (3.88)	—	197 (7.75)	66 (2.59)	578 (22.75)	546 (21.50)	1260 (49.63)	241 (9.50)	267 (10.50)
HE1-015M	1051 (41.63)	776 (30.56)	114 (4.50)	—	229 (9.00)	76 (3.00)	578 (22.75)	546 (21.50)	1387 (56.63)	241 (9.50)	267 (10.50)
HE1-020M	1053 (41.44)	813 (32.00)	149 (5.88)	—	298 (11.75)	92 (3.63)	641 (25.25)	597 (23.50)	1424 (56.06)	241 (9.50)	267 (10.50)
HE2-012M	1,045 (41.13)	833 (32.81)	114 (4.50)	—	229 (9.00)	65 (2.56)	714 (28.13)	533 (21.00)	1384 (54.50)	246 (9.69)	276 (10.88)
Model	M	N	O	P	Q	R	S	T	W	X	Y
HE1-005M	89 (3.50)	89 (3.50)	256 (10.06)	48 (1.88)	156 (6.13)	184 (7.25)	67 (2.63)	49 (1.94)	503 (19.81)	127 (5.00)	165 (6.50)
HE1-010M	152 (6.00)	216 (8.50)	256 (10.06)	64 (2.50)	156 (6.13)	184 (7.25)	67 (2.63)	49 (1.94)	503 (19.81)	5.00 (127)	221 (8.69)
HE1-015M	133 (5.25)	254 (10.00)	273 (10.75)	86 (3.38)	175 (6.88)	219 (8.63)	83 (3.25)	65 (2.56)	508 (20.00)	225 (8.88)	279 (11.00)
HE1-020M	240 (9.44)	216 (8.50)	310 (12.19)	102 (4.00)	229 (9.00)	295 (11.63)	78 (3.06)	56 (2.19)	495 (19.50)	152 (6.00)	346 (13.63)
HE2-012M	114 (4.50)	114 (4.50)	273 (10.75)	57 (2.25)	175 (6.88)	219 (8.63)	83 (3.25)	65 (2.56)	621 (24.44)	225 (8.88)	221 (8.69)

Chain bucket includes trailing trolley on HE1-015M and any other 4 wheel trolley model with 35 feet (10.7 m) of lift or more.



Dimensions: Trolley Mounted Hoist Frame 1 with 16 mm chain mm (in)

Model	A	B	C	D	E	F	G	H	J	K	L	
HE2-025M	1,205 (47.44)	1,578 (62.13)	483 (19.00)	622 (24.50)	229 (9.00)	92 (3.63)	714 (28.13)	533 (21.00)	1595 (62.81)	246 (9.69)	276 (10.88)	
HE2-037M	1,376 (54.19)	1,648 (64.88)	610 (24.00)	673 (26.50)	298 (11.75)	129 (5.06)	791 (31.13)	610 (24.00)	1835 (72.25)	246 (9.69)	276 (10.88)	
HE2-050M	1,480 (58.25)	1,648 (64.88)	610 (24.00)	673 (26.50)	298 (11.75)	170 (6.69)	791 (31.13)	610 (24.00)	1980 (77.94)	246 (9.69)	276 (10.88)	
Model	M	N	O	P	Q	R	S	T	W	X	Y	Z
HE2-025M	175 (6.88)	286 (11.25)	294 (11.56)	102 (4.00)	175 (6.88)	219 (8.63)	81 (3.19)	65 (2.56)	470 (18.50)	—	346 (13.63)	546 (21.50)
HE2-037M	283 (11.12)	286 (11.25)	330 (13.00)	121 (4.75)	229 (9.00)	289 (11.38)	81 (3.19)	57 (2.25)	487 (19.19)	—	392 (15.44)	622 (24.50)
HE2-050M	321 (12.63)	286 (11.25)	330 (13.00)	165 (6.50)	229 (9.00)	289 (11.38)	81 (3.19)	57 (2.25)	487 (19.19)	—	524 (20.63)	622 (24.50)

## How to Order

<b>HE</b>		<b>2-005</b>		<b>M</b>	<b>A</b>	<b>3</b>	<b>-</b>	<b>30</b>	<b>-</b>	<b>27</b>	<b>4</b>	<b>L</b>	
Model Series	Frame size/Capacity (t)		Suspension		Trolley flange adjustment		Control		Lift	Control Length		Voltage	Options
<b>HA</b> Hercu-Link® Electrically powered	1	005	5	<b>H</b> Top hook mount	<b>A</b> Standard	<b>1</b> Pull rope	<b>xx</b>	<b>1</b> 208-3-60	<b>B</b> Trolley bumpers <sup>(1)</sup>				
		010	10	<b>C</b> Clevis mount	<b>B</b> 2" (50.8 mm) extension	<b>2</b> 1 motor pendant (2 button)	10 ft (3m) std.	<b>2</b> 230-3-60	<b>D</b> Dual speed				
		015	15	<b>D</b> Deck mount	<b>C</b> 4" (101.6 mm) extension	<b>3</b> 2 motor pendant (4 button)		<b>3</b> 380-3-50	<b>G</b> Trolley guide rollers <sup>(1)</sup>				
		020	20	<b>P</b> Plain trolley	<b>D</b> 6" (152.4 mm) extension	<b>4</b> 3 motor pendant (6 button)		<b>4</b> 460-3-60	<b>K</b> Clevis in lieu of bottom hook				
	2	012	12.5	<b>G</b> Geared trolley	<b>M</b> No trolley; used with hook, clevis and deck mount	<b>5</b> 1 motor pendant with mainline disconnect		<b>5</b> 575-3-60	<b>L</b> Electronic overload protection				
		025	25	<b>M</b> Electric motor trolley		<b>6</b> 2 motor pendant with mainline disconnect		<b>6</b> 415-3-50	<b>P</b> Marine 812 finish				
		037	37.5			<b>7</b> 3 motor pendant with mainline disconnect		<b>7</b> 400-3-50	<b>Q</b> Special paint; specify				
		050	50						<b>R</b> The product will be equipped with zinc plated load chain, copper plated load hook(s) and trolley wheels. Zinc plated hand chain if applicable.				
									<b>S</b> Up to 20 ton units will be equipped with zinc plated load chain, solid bronze load hook(s) and trolley wheels. Zinc plated hand chain if applicable.				
									<b>T</b> Galvanized chain container				
									<b>Y</b> Hull bumpers				
									<b>Z</b> Sandblast & carbozinc primer				

**NOTES:**  
<sup>(1)</sup> Standard on Frame 2 models



For More Information [www.ingersollrandproducts.com/lifting](http://www.ingersollrandproducts.com/lifting) [lifting@irco.com](mailto:lifting@irco.com)

Ingersoll Rand, IR, the IR logo and Impactool are trademarks of Ingersoll Rand, its subsidiaries and/or affiliates. All other trademarks are the property of their respective owners. Nothing contained on these pages is intended to extend any warranty or representation, expressed or implied, regarding the product described herein. Any such warranties or other terms and conditions of sale of products shall be in accordance with Ingersoll Rand's standard terms and conditions of sale for such products, which are available upon request. Product improvement is a continuing goal at Ingersoll Rand. Designs and specifications are subject to change without notice or obligation. Unless otherwise noted this equipment is not designed for transporting people or lifting loads over people. It is the user's responsibility to determine the suitability of this product for any particular use and to check compliance with applicable regulations. Before installation, see maintenance and operations manual for additional warnings and precautions.