

ELK Handy-Handle Pendant Control Kit



ELK-K1100



User Manual



Save These Instructions



Edition 4
March 2020
CCN 47610913001

When tool life has expired, it is recommended to:

- disassemble the tool
- degrease the tool
- separate tool parts by material for correct recycling

Tool repair and maintenance should be conducted by an authorized service center.

Refer all communications to the nearest **Ingersoll Rand** office or distributor.

Manuals are available at ingersollrandproducts.com

Table 1. Product Information Manuals

Publication	Part/Document Number
Product Safety Manual	47584687001
Product Information Manual	47584686001
Product Parts Information Manual	47584688001
Product Maintenance Information Manual	47584689001

Product Description

This motorized trolley unit allows precise and controlled operation at the hook.

Handy-Pendant Replacement

WARNING

Disconnect power from hoist system.

1. Remove bottom block assembly (256).
2. Slide cable connector on to control cable (208) at motor end.
3. Place load chain through middle of coiled control cable. Slide control cable up to motor. Temporarily fasten control cable to chain with tape or string.
4. Remove cover on hoist.
5. Note current pendant control wire connections on terminal block. Disconnect wires and remove old control cable with cable connector.
6. Insert new cable connector with locknut (this one is a 90 degree elbow) into hoist body and twist until tight. Do not tighten with locknut at this time.
7. Push control cable (208) wire ends through (216) connector until about 3/4 inch (19 mm) of cable covering is exposed inside hoist.
8. Tighten gland nut on connector.
9. Twist cable connector until it is pointing in direction of control cable coils and then tighten locknut.
10. Connect new control cable (208) wires to terminal block (as noted earlier).
11. Replace cover on hoist. Release control cable from chain.
12. Push control cable up load chain (from load end) about 18 inches (457 mm) and temporarily fasten.
13. Place half of the bottom block assembly (256) onto end of load chain and insert pendant connector (211). Clamp other side of chain connector into place and fasten with screws.
14. Remove screws and lockwashers from top of pendant body (5).
15. Lift pendant assembly up and place socket on top of pendant body(5) and into connector (211).
16. Insert screws and lockwashers and tighten.
17. Remove screws and lockwashers from bottom socket of pendant body (5).
18. Insert load hook into socket. Orient hook throat to the position best suited for operation. Insert screws and lockwashers and tighten.

CAUTION

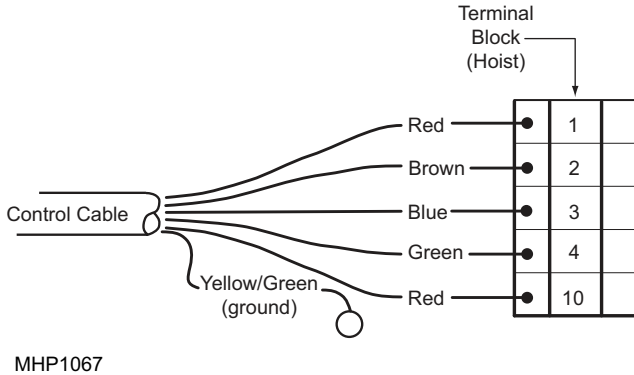
Electrical connections should be performed only by licensed electricians.

Connecting Control Cable

1. Remove cable connector cap, rubber grommet and plastic washer.
2. Screw cable connector body into pendant body, when strain relief body is pointed straight up, use locknut to tighten.
3. Free control cable from chain. Place cable connector cap on control cable followed by rubber grommet and plastic washer.

4. Remove screws and lockwashers, carefully remove switch cover.
5. Push control cable wire ends through connector until about 3/4 inch (19 mm) of cable covering is exposed.
6. Tighten gland nut on connector.
7. Insert screw through ground (earth tab, ground [earth]) wire eyelet and into pendant body then tighten.
8. Connect control cable wires to terminal block. Refer to [Figure 1, p. 4](#).

Figure 1. MHP1067



9. Place gasket over rear access hole followed by cover.
10. Insert screws and tighten.

Adjusting Height of Limit Stop

1. Operate Handy-Pendant and raise hook to highest position that it should go without crushing the control cable. Refer to Product Information Manual.
2. Place chain stopper (201) back on as shown in Product Parts Manual.

Testing Pendant

1. Turn on power to hoist.
2. Depress upper part of control levers and observe movement of load hook.
3. Depress lower part of control levers and observe movement of load hook. If hook movement does not correspond to lever direction, recheck all electrical connections.
4. Depress emergency stop button, Depress each of the levers one at a time and observe. No hook movement should be possible. Release emergency stop button by twisting.

Lubrication

To make sure continued satisfactory operation of the hoist and all of the components, all points requiring lubrication must be serviced with the correct lubrication at the proper time interval as indicated for each assembly. Correct lubrication is one of the most important factors in maintaining efficient operation.

The lubrication intervals recommended are based on intermittent operation of the hoist eight hours each day, five days per week. If the hoist is operated almost continuously or more than the eight hours each day, more frequent lubricant will be required. The lubricant types are based on operation in an environment relatively free of dust moisture, and corrosive fumes. Use only those lubricants recommended. Other lubricants may affect the performance of the hoist.

Approval for the use of other lubricants must be obtained from your **Ingersoll Rand** technical support or distributor. Failure to provide proper lubricant may result in damage to the hoist and or/its associated components.

Lubrication Grease

Strub N1424; Type DIN 51502: GP 0M-20

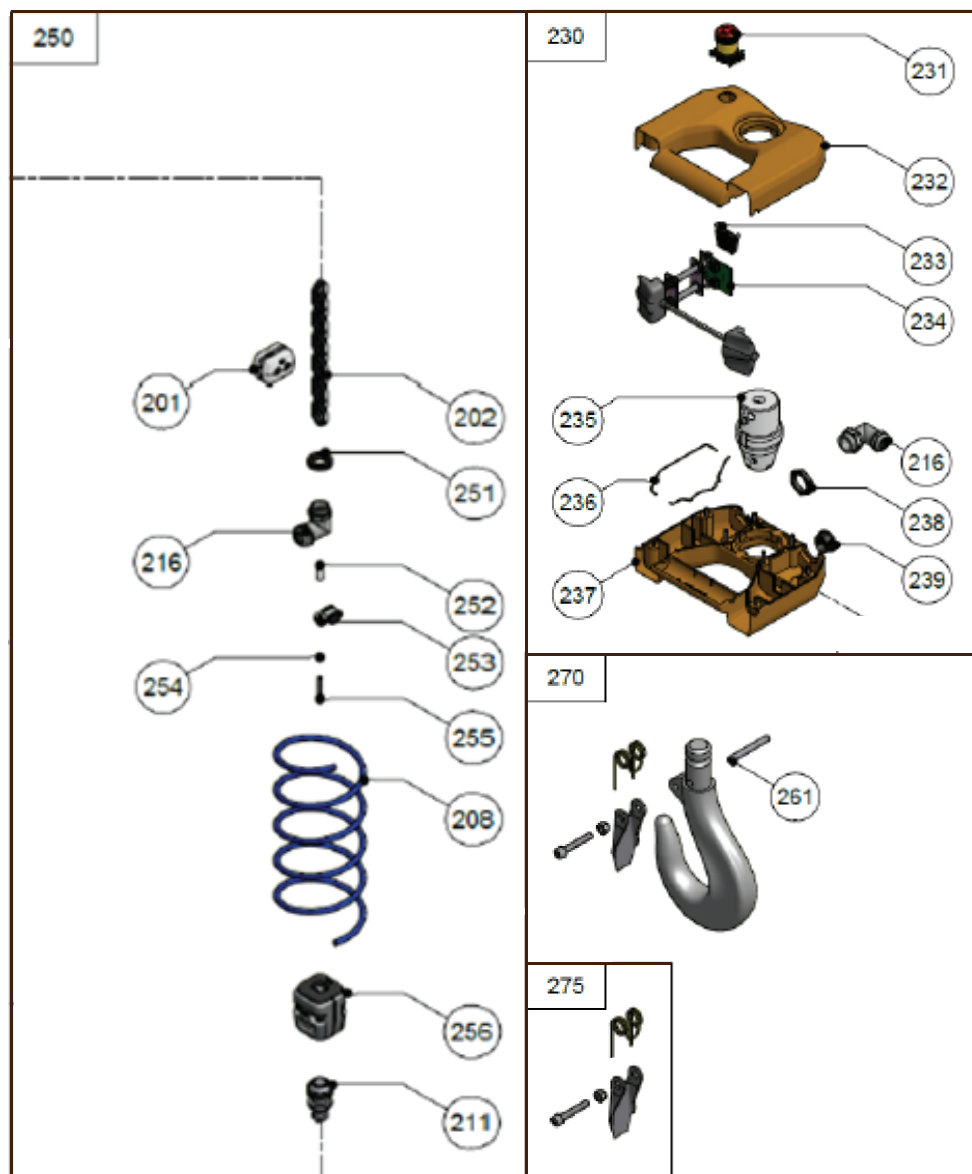
Inspection

Refer to Product Information and Maintenance Manuals for frequent and periodic inspection schedules.

If external evidence indicates the need, disassembly. Replace any worn or damaged parts. Clean, lubricate and reassemble.

Handy-Pendant Assembly

Figure 2. Handy-Pendant Assembly - Exploded View



Handy-Pendant Assembly

Table 2. Handy-Pendant Assembly - Parts List

Item	Part Description	Part Number	
		3 m	4 m
201	Limit Stop Assembly GP 500	9511.3013.3	
202	Load Chain	Contact Factory	
208	Control Cable Spiral 18Wdg. 5P EM/HZ H	9210.4013.4	---
	Control Cable Spiral 23 Wdg. 5P EM/HZ H	---	9210.4014.4
211	Bottom Block Assembly	9401.4027.4	
216	Connector	9055.3116	
230	Control Station cpl. GCHH (includes 231-239)	9401.4009.3	
231	Contact Element TER NC PRSL 1001JI	9051.4001	
232	Casing Upper Part GCHH	9401.4013.2	
233	Contact Element TER NC PRSL 1001PI	9051.3407	
234	Rocker Switch Compl. GCHH	9401.4025.4	
235	Bolt Control Station Handy	9401.4021.3	
236	Seal Cord ø1.5 NBR70 Sh A Black	9040.4009	
237	Casing Lower Part GCHH	9401.4014.2	
238	Counter Nut M25-KS SEE DWG 80169113	80169402	
239	Protecting Cap ø25.5	9040.0862	
250	Handy-Kit GPMH 250/3m	9500.3120.2	---
	Handy-Kit GPH 500 4m	---	9511.4002.2
251	Counter Nut M20-KS	9055.4012	
252	Distance Tube Geared Limit sw. EM25/50	9215.3129.4	
253	Circlip RSGU 8/15	9031.8009	
254	Washer	9031.3902	
255	Screw, Gear Cover	9030.0267	
256	Single Fall Hook Clamp GP 500	9511.3109.3	
261	Spring Dowel Sleeve 4x36,SW	0031.6032	
270	Swivel Load Hook	9511.4030.4	
275	Safety Catch Compl. GP 250/500	9510.3079.4	

