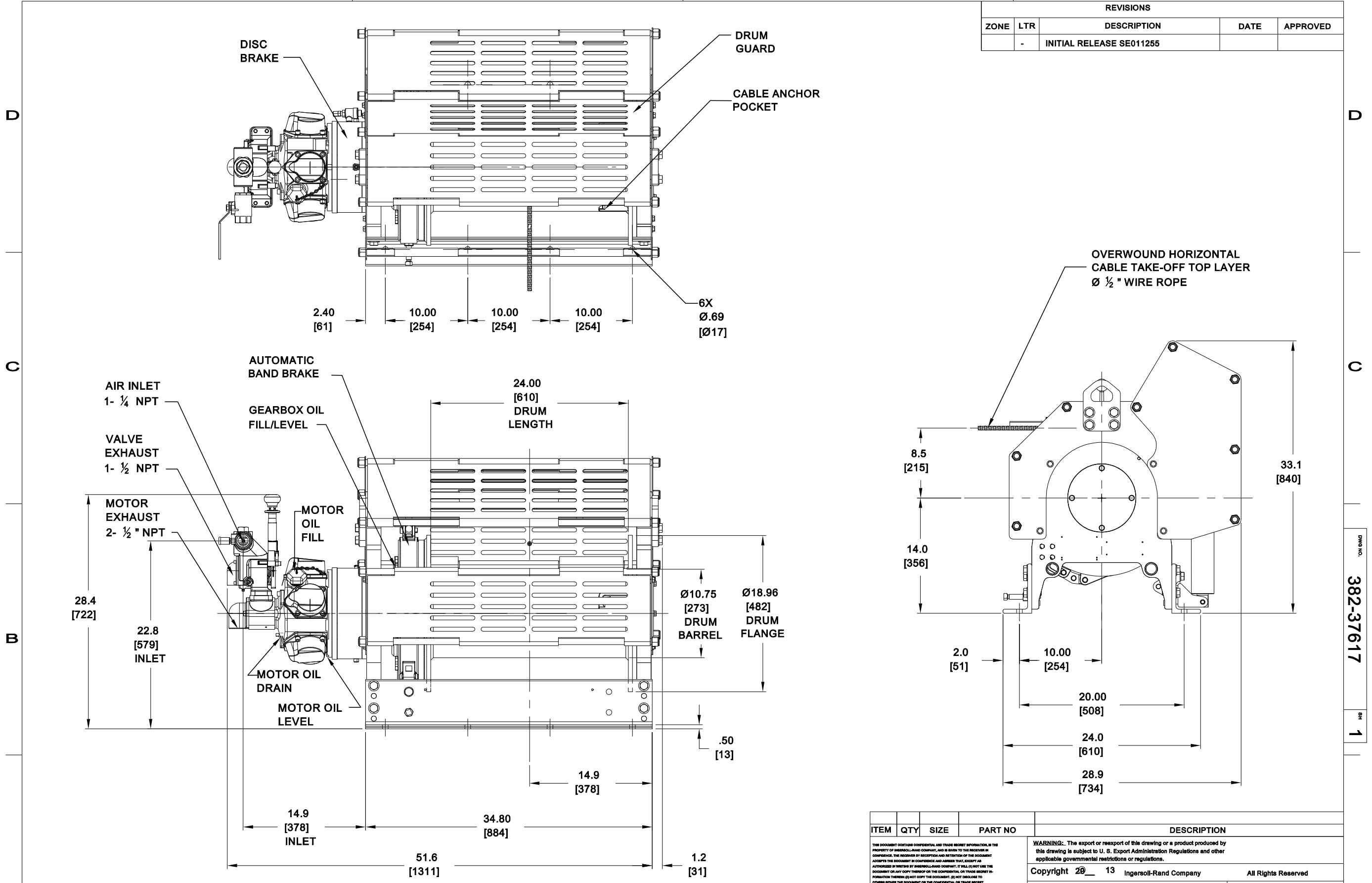


REVISIONS				
ZONE	LTR	DESCRIPTION	DATE	APPROVED
-	-	INITIAL RELEASE SE011255		



DWG NO. 382-37617 SH. 1

PERFORMANCE SPECIFICATIONS:
 RATED LINE PULL MAN-RIDER - 3180 LB [1442 kg] ± TOP LAYER
 RATED LINE SPEED MAN-RIDER - 76 fpm [23 m/min] ± TOP LAYER
 RATED LINE PULL UTILITY - N/A
 RATED LINE SPEED UTILITY - N/A
 INLET PRESSURE - 90 psi [6.2 bar] RUNNING
 AVERAGE AIR CONSUMPTION - 280 cfm [7.9 m3/min]

NOTE:
 DIMENSIONS SHOWN ARE IN INCHES
 DIMENSIONS IN BRACKETS [] ARE mm

ITEM	QTY	SIZE	PART NO	DESCRIPTION
<p>THE DOCUMENT CONTAINS CONFIDENTIAL AND TRADE SECRET INFORMATION, IS THE PROPERTY OF INGERSOLL-RAND COMPANY, AND IS LOANED TO THE RECEIVER IN CONFIDENCE. THE RECEIVER IN RECEIVING AND RETENTION OF THIS DOCUMENT ACCEPTS THE DOCUMENT IN CONFIDENCE AND AGREES THAT, EXCEPT AS AUTHORIZED BY WRITERS BY INGERSOLL-RAND COMPANY, IT WILL NOT USE THE DOCUMENT OR ANY COPY THEREOF OR THE CONFIDENTIAL OR TRADE SECRET INFORMATION THEREIN (NOT COPY THE DOCUMENT, NOT DISCLOSE TO OTHERS WITHIN THE COMPANY OR THE CONFIDENTIAL OR TRADE SECRET INFORMATION THEREIN, AND IS OBLIGATED BY THE NEED TO RETURN THE DOCUMENT, OR UPON DEMAND, RETURN THE DOCUMENT, ALL COPIES THEREOF, AND ALL MATERIAL COPIED THEREFROM.</p>				
<p>UNLESS OTHERWISE SPECIFIED TOLERANCES ON DIMENSIONS ARE DECIMALS: 2 PLACES: .001 ± .02 3 PLACES: .000 ± .005 ANGLES: ± 0.5°</p>				
<p>WARNING: The export or reexport of this drawing or a product produced by this drawing is subject to U. S. Export Administration Regulations and other applicable governmental restrictions or regulations.</p>				
<p>Copyright © 2013 Ingersoll-Rand Company All Rights Reserved</p>				
<p>IR Ingersoll-Rand.</p>				<p>Ingersoll-Rand Company Tool & Hoist Division Seattle, WA, U.S.A.</p>
<p>WINCH, AIR OUTLINE/DIMENSIONAL FA2I-MR24AK1G</p>				
<p>SCALE: 1:8</p>		<p>SIZE C</p>		<p>REV -</p>
<p>APPROVED: SRB 10/28/13</p>			<p>DWG NO. 382-37617</p>	
<p>DATE 10/25/13</p>				<p>SHEET 1 OF 1</p>