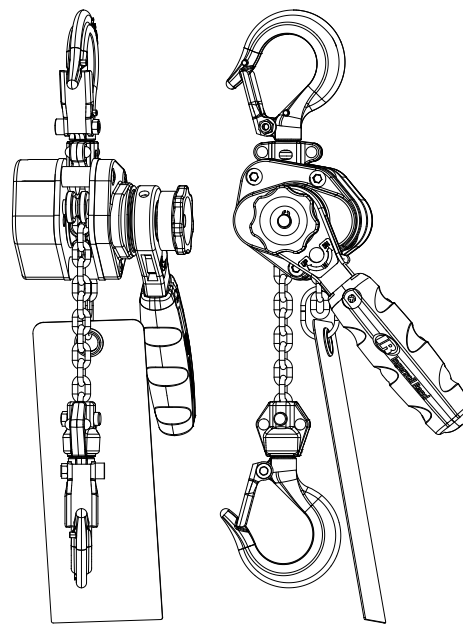


Product Parts Information



Lever Chain Hoists KX Series



(Dwg. MHP3275)



Save These Instructions



Form 48489041
Edition 1
September 2012
© 2012 Ingersoll-Rand, plc

Only allow **Ingersoll Rand** trained technicians to perform maintenance on this product. For additional information contact **Ingersoll Rand** factory or nearest Distributor.

For additional supporting documentation refer to Table 1 'Product Information Manuals' on page 2.

Manuals can be downloaded from <http://www.ingersollrandproducts.com>.

The use of other than genuine **Ingersoll Rand** replacement parts may result in safety hazards, decreased performance and increased maintenance and will invalidate all warranties.

Original instructions are in English. Other languages are a translation of the original instructions.

Refer all communications to the nearest **Ingersoll Rand** Office or Distributor.

Table 1: Product Information Manuals

Publication	Part/Document Number	Publication	Part/Document Number
Product Safety Information Manual	48489231	Product Maintenance Information Manual	48496376
Product Information Manual	48489025		

TABLE OF CONTENTS

Description	Page No.	Dwg. Name	Page No.
Parts Ordering Information	3		
Hoist Assembly Parts Drawing	4	(Dwg. MHP3271)	4
Hoist Assembly Parts List	5		

PARTS ORDERING INFORMATION

These products are designed and constructed to provide long, trouble-free service. In time it may be necessary to order and install new parts to replace those that have been subjected to wear.

For your convenience and future reference, it is recommended that the following information be recorded.

Model Number _____

Serial Number _____

Date Purchase _____

When ordering replacement parts, please specify the following:

1. Complete model number and serial number as it appears on the data (name) plate.
2. Part number(s) and part description as shown in this manual.
3. Quantity required.

The data (name) plate is located on the product.

NOTICE

- **Continuing improvement and advancement of design may cause changes to this equipment which are not included in this manual. Manuals are periodically revised to incorporate changes. Always check the manual edition number on the front cover for the latest issue.**
- **Sections of this manual may not apply to your product.**
- **The use of other than genuine Ingersoll Rand replacement parts may result in safety hazards, decreased performance and increased maintenance, and will invalidate all warranties.**

■ Return Goods Policy

Ingersoll Rand will not accept any returned goods for warranty or service unless prior arrangements have been made and written authorization has been provided from the location the goods were purchased.

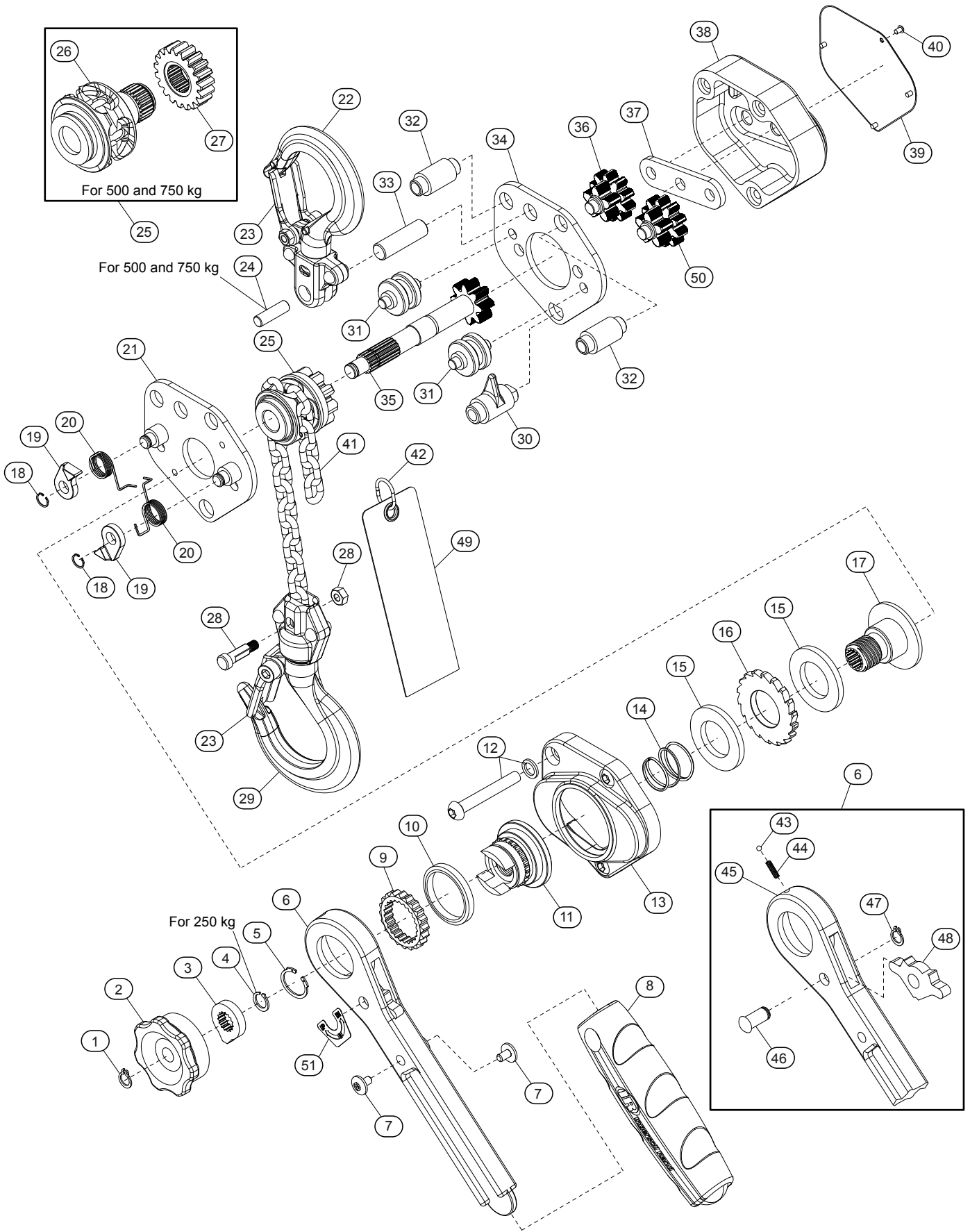
Products that have been modified without **Ingersoll Rand** approval, mishandled or overloaded will not be repaired or replaced under warranty. A printed copy of the warranty that applies to this product is provided inside the back cover of the product information manual or in some cases the parts manual.

■ Disposal



When the life of the product has expired, it is recommended that it be disassembled, degreased and parts separated as to materials so that they may be recycled.

HOIST ASSEMBLY PARTS DRAWING



(Dwg. MHP3271)

HOIST ASSEMBLY PARTS LIST

Item No.	Description of Part	Total Qty.	Part Number		
			0.25 ton	0.5 ton	0.75 ton
1	Retainer Ring	1	48490270	48490288	48490296
2	Free Knob	1	48490304	48490312	
3	Stop Knob	1	48490320	48490338	
4	Snap Ring I	1	48490346	---	
5	Snap Ring II	1	48490379	48490387	48490395
6	Lever Handle Assembly (Note 1)	1	48490403	48490411	48490429
7	Lock & Nut	1	48491831	48491849	48491856
8	Grip	1	48487789	48487797	
9	Change Over Gear	1	48490445	48490452	
10	Bushing	1	48490460	48490478	
11	Brake Plate	1	48490486	48490494	48490502
12	Screw & Washer	3	48490536	48490551	48490577
13	Lever Cover	1	48490585	48490593	48490601
14	Free Spring	1	48490635	48490650	48490668
15	Brake Disc	1 Set	48490676	48490684	48490692
16	Ratchet Disc	1	48490700	48490718	48490726
17	Brake Hub	1	48490734	48490742	48490759
18	Snap Ring IV	2	48490767		
19	Pawl	2	48490783		
20	Pawl Spring	2	48490791		
21	Side Plate A Assembly	1	48490825	48490833	48490841
22	Top Hook Assembly (Note 2)	1	48491229	48491245	48491252
23	Latch Kit	1	48491260	48491278	48491286
24	Pin	1	---	48491302	48491310
25	Load Sheave Assembly (Note 3)	1	48491328	---	---
26	Load Sheave	1	---	48491336	48491344
27	Load Gear	1	---	48491369	48491377
28	Load Pin & Nut	1	48491385	48491393	48491401
29	Bottom Hook Assembly (Note 4)	1	48491419	48491427	48491435
30	Chain Stripper	1	48491443	48491450	48491468
31	Load Chain Guide	2	48491476	48491484	48491492
32	Stay Bolt	2	48491500	48491518	48491526
33	Top Pin	1	48491534	48491542	48491559
34	Side Plate B	1	48491567	48491575	48491583
35	Pinion Shaft	1	48491591	48491609	48491617
36	Disc Gear A	1	48491625	48491633	48491641
37	Reinforced Plate	1	48491658	48491666	48491674
38	Gear Case	1	48487755	48487763	48487771
39	Nameplate	1	46817854	46817862	46817870
40	Rivet	4	48491682	48491690	48491708
41	Load Chain	AR	48487383	48487391	48487409
42	Chain Stopper	1	48491716	48491724	48491732
43	Roller	1	---		
44	Change Over Spring	1	---		
45	Lever Handle	1	---		
46	Selector Pin	1	---		
47	Snap Ring III	1	---		
48	Selector	1	---		
49	Warning Tag	1	48488886		
50	Disc Gear B	1	48491625	48496343	48491641
51	Selector Label	1	48496582	48496590	48496608

Note 1: Includes items 43, 44, 45, 46, 47, and 48.

Note 2: Includes item 23.

Note 3: Includes items 26 and 27.

Note 4: Includes items 23 and 28.

AR: As Required

SERVICE NOTES

SERVICE NOTES
